

Orixa Registry Settings

Orixa Apps store a small number of settings in each user's Registry. This makes it more difficult for hackers to gain access to your system, as they will be unlikely to be able to duplicate these settings. Parts of these settings, which an Admin user need to update, are explained here. Other parts are kept confidential to avoid hackers using this webpage to their advantage.

When are Orixa Registry Settings Set?

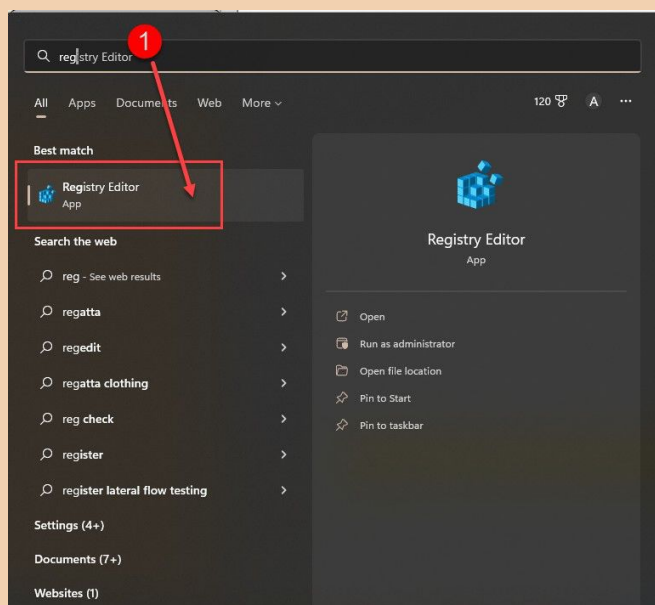
The normal installation process sets up your Registry Settings. Even Admin Users should only rarely need to access these settings.

The settings are stored at the Registry location: "Computer\HKEY_CURRENT_USER\Software\Orixa"

What is stored in the Orixa Registry Settings?

1. The presence of the Registry Key itself is part of Orixa's tests to ensure the user is valid.
2. The name of the main database for your App (usually simply called "Data")
3. The Database Path. This is a file-path such as "C:\Orixa\Database", however it is only used to access the database for **local** database connections. Its main use is as a root-folder for automated storage of items such as PDF files and other exported data. These are automatically saved to folders like: [DatabasePath]\Reports\PDFs\SalesInvoices\2022-11.
4. RemoteIP and Port: These are the addresses on the server computer used to access the database. They are not used in local database connections. These values must match the values set for the OrxServer.exe on the main server computer.
5. Signature: On top of the main password based encryption, Orixa Apps add an extra layer of differentiation to their database to foil unwanted attention. Your database can be given a "signature", which is a unique key used for every installation. If two installations of a database exist and communicate together, they will only be able to do so if the signatures match.

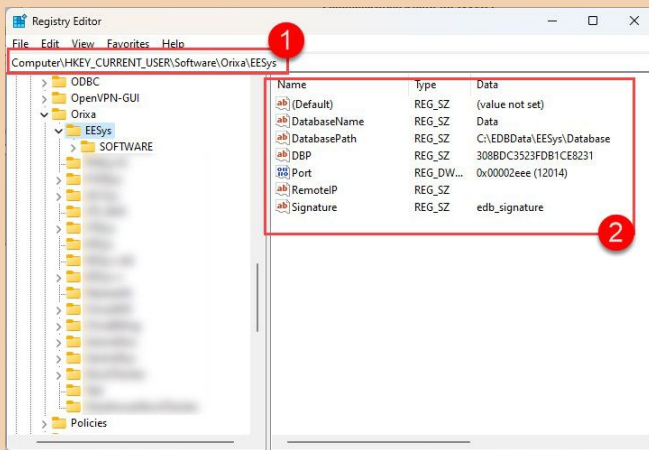
Accessing and editing Orixa Registry Settings



Accessing the Registry Editor

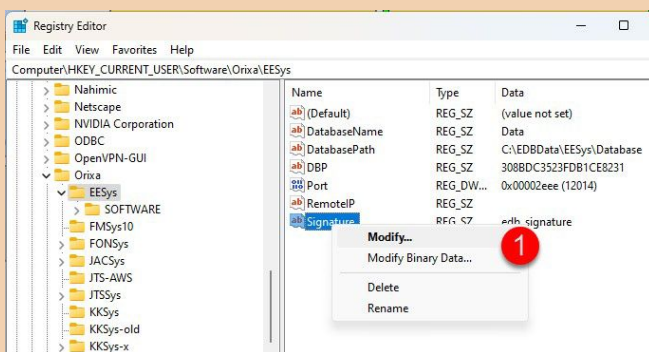
To edit the Orixa Registry Settings in Windows you must access the Registry Editor. To do this, click the **Start** button and type "Registry" as soon as the Registry Editor App shows (as shown at 1., in the image) click on it.

You will be asked to confirm that you have elevated security to run the App.



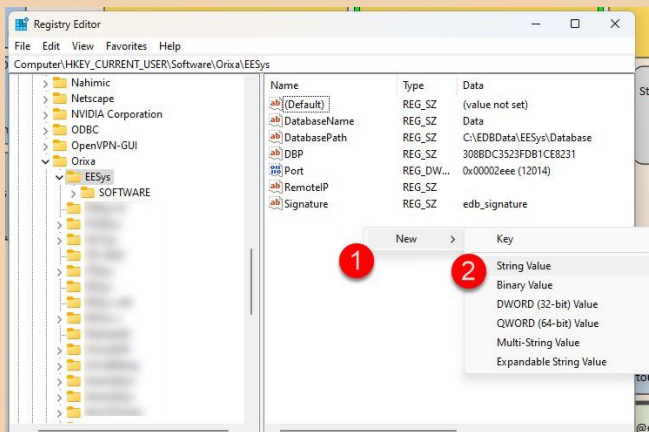
The Location of Orixa Settings in the Registry

1. Orixa Registry settings at:
Computer\HKEY_CURRENT_USER\Software\Orixa
2. The details of the settings.



Modifying a Registry Setting

To Modify any value, right-click on it with your mouse and click "Modify" on the list that appears.



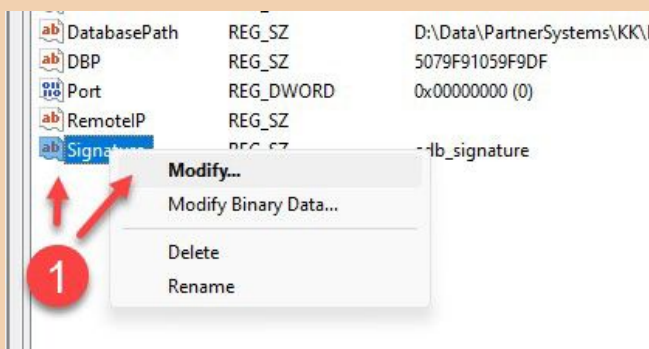
Adding Registry Name / Data, Step 1

If your App is specialized, or requires additional security, you may need to add extra items to the Orixa Registry Setting.

These are added as "Name / Data" pairs.

To do this:

1. Right click on the white-screen area under the existing details. A menu with "New" will appear.
2. Click on "New" and a sub-menu of different types of Registry settings data will appear. Click on the correct one needed for your new value (usually "String")

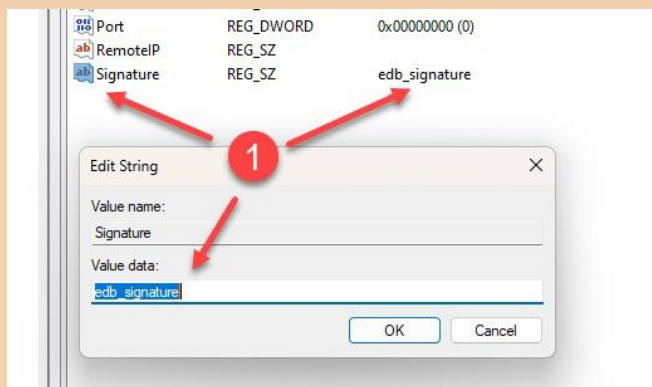


Windows Registry Editor Modifying a new key

Once the new item is added, you need to fill in its Name and Data, a default Name is added, you must **overwrite** this with the correct value you require.

You cannot update the Data in this way. That is updated by **Modifying**.

The images on the left show **right-clicking** on the value, and selecting "modify", then an edit window will open allowing you to alter the value as you wish.



Windows Registry Editor setting new key value